



**Department of Zoology &
Environmental Science,
Shillong College**



International Conference on Sustainability, Biodiversity and Conservation: Implications for Livelihood and Community Development

Conference dates: 06th and 07th August 2026
Venue: Shillong College

CALL FOR ABSTRACTS!

Thematic Areas

- ✓ Human-Animal Conflict
- ✓ Forest-Based Livelihood
- ✓ Bioresources Management
- ✓ Sustainable Tourism
- ✓ River Confluence & Conservation
- ✓ Indigenous Traditional Knowledge Systems
- ✓ Climate Change
- ✓ Zoonoses
- ✓ Biodiversity
- ✓ Policy
- ✓ AI & Conservation



IMPORTANT DATES

Abstract submission deadline

 **10th July 2026**

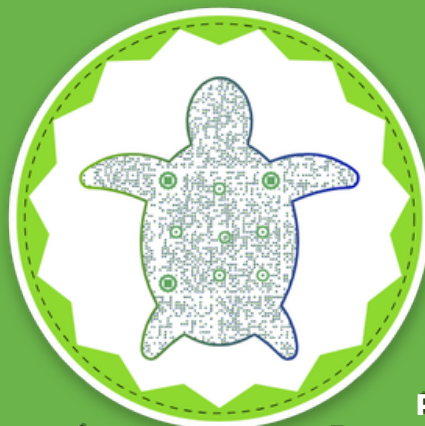
Notification of acceptance

 **15th July 2026**

Last date for submission of Full Paper

 **25th July 2026**

Submit your Abstract by clicking or scanning the following QR Code



**Oral
Presentation**

**Poster
Presentation**

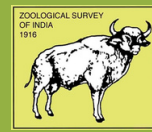
Visit the College Website for more information about the conference



shillongcollege.ac.in



INTERNATIONAL CONFERENCE ON SUSTAINABILITY, BIODIVERSITY AND CONSERVATION: IMPLICATIONS FOR LIVELIHOOD AND COMMUNITY DEVELOPMENT



DETAILS ABOUT THEMATIC AREAS

HUMAN-ANIMAL CONFLICT

Human-wildlife conflict poses a critical challenge to both biodiversity conservation and community livelihoods. Interactions between humans and wild animals often lead to crop damage and animal fatalities, exacerbating poverty and social tensions. Research addressing these conflicts through community-driven strategies essential for fostering coexistence, enhancing livelihoods, and ensuring the conservation of important species are welcomed.



FOREST-BASED LIVELIHOOD AND INDIGENOUS PEOPLE'S RIGHTS ON NATURAL RESOURCES

Forests are vital to the sustenance and economic security of indigenous communities all over the world. Recognizing and securing the rights of these communities over their natural resources is pivotal in promoting forest-based livelihoods. Studies related to integrating traditional practices with modern sustainable forest management approaches to enhance livelihood security while preserving biodiversity are welcomed.

BIORESOURCES MANAGEMENT

Effective bioresources management is crucial for maintaining ecosystem services that support livelihoods. This entails sustainable harvesting practices, conservation efforts, and the promotion of agro-biodiversity. Research on enhancing knowledge about local flora and fauna that can empower communities to utilize bioresources sustainably, thereby fostering economic stability and environmental health are welcomed.

SUSTAINABLE TOURISM

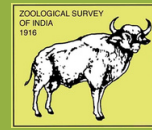
Sustainable tourism presents an opportunity for economic growth while conserving biodiversity. By promoting eco-friendly tourism initiatives that involve local communities, it is possible to generate income without compromising environmental integrity. Studies on community engagement in the field of Eco-Tourism that benefits accrue to the community, fostering a sense of stewardship towards natural resources are welcomed.

RIVER CONFLUENCE & CONSERVATION

The confluence of rivers serves as a critical habitat for various aquatic species and supports diverse livelihoods through fishing and aquaculture. Studies related to conservation initiatives aimed at protecting these ecosystems must engage local communities in planning and execution, ensuring that their needs and traditional knowledge are respected and incorporated into management strategies are welcomed.



INTERNATIONAL CONFERENCE ON SUSTAINABILITY, BIODIVERSITY AND CONSERVATION: IMPLICATIONS FOR LIVELIHOOD AND COMMUNITY DEVELOPMENT



DETAILS ABOUT THEMATIC AREAS

INDIGENOUS TRADITIONAL KNOWLEDGE SYSTEM

Indigenous traditional knowledge systems represent invaluable reservoirs of wisdom regarding local ecosystems. These practices can inform contemporary conservation efforts and contribute to sustainable resource management. Recognizing and integrating indigenous knowledge in policy-making can enhance conservation outcomes while promoting community development. Studies in the field of ITKs and their application in the field of potential treatment, conservation and management are welcomed.

CLIMATE CHANGE:

Climate change poses significant threats to biodiversity and livelihoods, particularly for vulnerable communities. It can disrupt seasonal patterns, impact agricultural productivity, and exacerbate human-animal conflicts. Research adopting adaptive strategies that emphasize resilience and sustainable practices essential for mitigating these impacts and ensuring the wellbeing of local populations are welcomed.

ZOONOSIS

The emergence of zoonotic diseases highlights the delicate balance between human health, wildlife, and biodiversity. Efforts to monitor and manage zoonotic risks must consider the socio-economic contexts of affected communities. Studies on local populations about disease transmission pathways and involving them in surveillance efforts can enhance public health and conservation synergy are welcomed.

BIODIVERSITY

Biodiversity is a cornerstone of ecological stability and provides myriad services that underpin human livelihoods. Studies focus on biodiversity research, potential strategies aimed at preserving biodiversity leading to habitat conservation, restoration programs, and community engagement to ensure the sustainable use of resources while safeguarding ecosystem functions are welcomed.

POLICY

Robust policy frameworks are necessary to harmonize the objectives of biodiversity conservation and community development. Studies on the development of Policies focused on inclusive, participatory, and tailored to local contexts ensuring that local voices are heard in decision-making processes can enhance the effectiveness and implementation of conservation strategies are welcomed.

AI & CONSERVATION

Artificial Intelligence (AI) can play a transformative role in conservation efforts by facilitating data collection and analysis, monitoring wildlife populations, and predicting human-animal conflicts. Studies on usage of Leveraging technology (such as App based) that enhances the capacity of communities to engage in conservation activities and optimize resource management are welcomed.